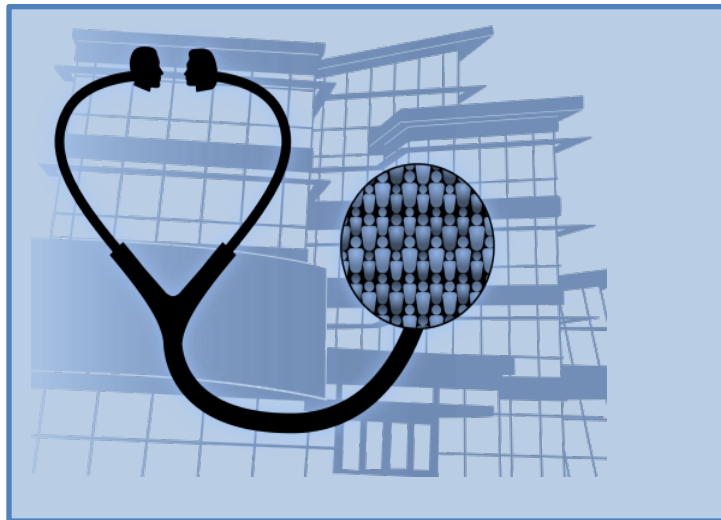




# ETHICS IN HEALTHCARE

## 2020

*A One-Day Conference for Collaborative Dialogue  
and Inter-Professional Exchange*



Friday, May 29, 2020  
8:00 AM – 4:15 PM

**University of Iowa Carver College of Medicine**  
Medical Education Research Facility  
375 Newton Road  
Iowa City, Iowa

## General Information

### Audience

Physicians, Nurses, Social Workers, Chaplains, Attorneys, Physician Assistants, Trainees, Students, and Others

### Background

With the steady introduction of more treatment options and biotechnologies, an increasing number and range of ethical challenges in health care are emerging. This conference is designed to help professionals meet these challenges through their work as clinicians, members of ethics committees or ethics consult teams, and administrators.

### Purpose

- Provide up-to-date information in healthcare ethics relevant to clinical practice.
- Provide approaches to ethical reasoning that clarify ethical problems.
- Facilitate professional discussion of ethical challenges and decision making in healthcare.
- Encourage professional networking for ongoing dialogue, support, and collaboration.

### Approach

- Four sessions (each 1.5 hours) covering different topics in clinical ethics.
  - Each session provides a lecture, small group case-based discussion, and a large group Q&A wrap-up.
- Time and opportunity for dialogue and networking.

### Objectives

#### **SESSION ONE**

- Identify key events and issues that have led to the emergence of contemporary clinical ethics consultation.
- Describe the goals and scope of clinical ethics consultation and distinguish it from roles of other services of committees, such as an ethics committee or policy review committee.
- Discuss advantages and disadvantages of individual, small team, and committee models for providing ethics consultation.

#### **SESSION TWO**

- Describe the complex trajectory and uncertain prognosis of life limiting cardiac disease.
- Recognize the spectrum of burden and complexity involved in the management of implanted cardiac devices toward the end of life.
- Describe three different ethical perspectives on device deactivation.
- Discuss the ethical strengths and weaknesses of device-specific advance directives.

#### **SESSION THREE**

- Describe the foundational ethical and legal concepts underlying substitute medical decision making.
- Explore legal analysis of decision-making authority and process requirements when a substitute decision maker is needed.
- Use case studies to illustrate challenging situations where decision-making authority may not be clear.

#### **SESSION FOUR**

- Define professional boundaries and explain their importance in clinician-patient relationships.
- Describe and illustrate professional risks of social media use.
- Provide ethical guidance for social media use to protect privacy, maintain boundaries, and promote trust.

### Continuing Education Credit

The University of Iowa Roy J. and Lucille A. Carver College of Medicine is accredited by the Accreditation Council for Continuing Medical Education (ACCME) to provide continuing medical education for physicians.

**Physicians:** The University of Iowa Roy J. and Lucille A. Carver College of Medicine designates this live activity for a maximum of 6.0 *AMA PRA Category 1 Credit(s)*<sup>™</sup>. Physicians should claim only the credit commensurate with the extent of their participation in the activity.

**Nurses:** This program is offered in cooperation with the University of Iowa College of Nursing, an Iowa Board of Nursing approved provider, number 1. With full time attendance, 6.0 contact hours will be awarded.

## Registration

The registration fee is \$100 for all attendees and includes refreshments during breaks and lunch. There will be an additional fee of \$25 if you would like continuing education credit.

While registration is open until the start of the meeting, we encourage registration by May 22, 2020, to enable us to provide the best possible service to participants. **A late fee of \$25 will be added for registrations made after May 22, 2019.**

## Cancellation Policy

Registrations canceled on or before May 22, 2020, will be refunded minus a \$25 processing fee. Registrations canceled after May 22, 2020, will not be refunded. To cancel your registration, please call the Program in Bioethics and Humanities Office @ (319) 335-6706.

## A Note Regarding Room Temperatures

Unfortunately, it is difficult to maintain climate control in a conference facility in a way that will satisfy all participants. For your comfort, you may wish to bring a sweater or jacket to the conference, in case one is needed.

## Parking

Parking is available in Newton Road Parking Ramp at a maximum cost of \$20 per day. The location of the Newton Road Parking Ramp may be found at our conference website: <https://medicine.uiowa.edu/bioethics/ethics-healthcare-conference/location-and-parking>. Please follow the signs to the ramp entrance.

## Hotels

Participants are responsible for making their own hotel reservations, if needed, and may do so by contacting the Iowa City/Coralville Convention and Visitors Bureau at (800) 283-6592 or any hotel in the Iowa City area. The following hotels have complimentary shuttle service to the UI Healthcare campus: Hilton Garden Inn Iowa City Downtown University (319) 248-6100; the Coralville Marriott Hotel & Conference Center (319) 688-4000; and the Radisson Hotel & Conference Center (Coralville) (319) 351-5049. Rates are not guaranteed.

## Disability Statement

The University of Iowa prohibits discrimination in employment, educational programs, and activities on the basis of race, national origin, color, creed, religion, sex, age, disability, veteran status, sexual orientation, gender identity, or associational preference. The University also affirms its commitment to providing equal opportunities and equal access to University facilities. For additional information, contact the Office of Equal Opportunity and Diversity (319) 335-0705.

Individuals with disabilities are encouraged to attend all University of Iowa sponsored events. If you are a person with a disability who requires an accommodation in order to participate in this program, please contact the Continuing Medical Education Division in advance at (319) 335-8599.

## Faculty Disclosure

Everyone in a position to control the content of this educational activity will disclose to the CME provider and to attendees all relevant financial relationships with any commercial interest.

## PROGRAM AGENDA

Friday, May 29, 2020

Medical Education Research Facility (MERF)

*Each **session** includes a 40-minute lecture, 35-minute small group case-based discussions, and a 20-minute large group Q&A wrap-up. All sessions will begin in Room 2117 of the Medical Education Research Facility (MERF). The keynote session will be open to the University community.*

7:30 – 8:00 AM	Registration and Coffee Atrium, MERF
8:00 - 8:15 AM	Welcome and Announcements Lauris Kaldjian, MD, PhD 2117 MERF
8:15 – 9:50 AM	<b>SESSION 1</b> <b>Clinical Ethics Consultation: Standards, Structures, and Strategies</b> Rebecca Benson, MD, PhD
9:50 – 10:10 AM	Break and Refreshments Atrium, MERF
10:10 – 11:45 AM	<b>SESSION 2 – Keynote Presentation –</b> <b>Ethics of Discontinuing Cardiac Device Therapy Toward the End of Life</b> James Kirkpatrick, MD
11:45 – 12:45 PM	Lunch Atrium, MERF
12:45 – 2:20 PM	<b>SESSION 3</b> <b>Role of Substitute Decision Makers in the Informed Consent Process</b> Joseph Clamon, JD
2:20 – 2:40 PM	Break and Refreshments Atrium, MERF
2:40 – 4:15 PM	<b>SESSION 4</b> <b>Ethics and Boundaries in the Connected World of Social Media</b> Lauris Kaldjian, MD, PhD

Determination of educational content for this program and the selection of speakers are responsibilities of the conference director. There is no commercial or outside support for this conference.



## Registration

**Ethics in Healthcare 2020 Conference  
Friday, May 29, 2020**

### TWO WAYS TO REGISTER:

**If paying by check, please complete the registration form and send it along with your check, made payable to *The University of Iowa*, to the following address:**

Joyce M. Craig  
University of Iowa Carver College of Medicine  
Program in Bioethics and Humanities  
500 Newton Road  
1-106 Medical Education Building  
Iowa City, IA 52242

*Payment is required at time of registration. We will not consider you registered until payment is received.*

**To pay with a credit card, please go to the following link to register online.**

<https://www.signmeup.com/site/reg/register.aspx?fid=M92VXG7>

While registration is open until the start of the meeting, we encourage registration by May 22, 2020, to enable us to provide the best possible service to participants. **A late fee of \$25 will be added for registrations received after May 22, 2020.** Registrations canceled on or before May 22, 2020, will be refunded minus a \$25 processing fee. Registrations canceled after May 22, 2020, will not be refunded. To cancel your registration, please call the Program in Bioethics and Humanities Office @ (319) 335-6706.

Please print clearly:

Name \_\_\_\_\_

Address \_\_\_\_\_

City \_\_\_\_\_ State/ZIP \_\_\_\_\_

Phone \_\_\_\_\_

Email \_\_\_\_\_

Company or Business Name \_\_\_\_\_

**DEGREE(s) - required for CME/CEU credit:** \_\_\_\_\_

Please select your professional role:

- |                                        |                                   |                                                         |
|----------------------------------------|-----------------------------------|---------------------------------------------------------|
| <input type="checkbox"/> Physician     | <input type="checkbox"/> Nurse    | <input type="checkbox"/> Physician Assistant            |
| <input type="checkbox"/> Social Worker | <input type="checkbox"/> Chaplain | <input type="checkbox"/> Attorney                       |
| <input type="checkbox"/> Student       | <input type="checkbox"/> Trainee  | <input type="checkbox"/> Other (Please describe): _____ |

Do you have any special needs/need special accommodations? \_\_\_\_\_

Do you have a dietary restriction?  Gluten Free  Vegetarian  Other \_\_\_\_\_

<b>REGISTRATION FEES</b>	Conference Fee:	<input type="checkbox"/> \$ 100
	If you are requesting Continuing Education Credits:	<input type="checkbox"/> \$ 25
	Late Fee (after 5/22/20)	<input type="checkbox"/> \$ 25

**TOTAL AMOUNT ENCLOSED:** \_\_\_\_\_

*Please note: all-day parking fees in the Newton Road Parking Ramp are \$20 and paid on site.*

**Conference Director: Lauris C. Kaldjian, MD, PHD**

**Conference Coordinator: Joyce M. Craig**

### **Conference Faculty**

#### **KEYNOTE SPEAKER**

**JAMES KIRKPATRICK, MD, FASE, FACC**

Chair, Ethics Committee  
Ethics Consultation Service  
Director of Echocardiography  
University of Washington Medical Center

Professor of Medicine, Cardiovascular Division  
Adjunct Professor, Department of Bioethics and Humanities  
Section Chief, Cardiac Imaging  
University of Washington School of Medicine

**BRITTANY BETTENDORF, MD**

Clinical Assistant Professor, Department of  
Internal Medicine (Division of Rheumatology)  
University of Iowa Carver College of Medicine

**JOSEPH CLAMON, JD**

Associate Vice President for Legal Affairs,  
University of Iowa Health Care  
Adjunct Assistant Professor,  
University of Iowa College of Public Health

**AARON KUNZ, DO, MA, MME**

Clinical Assistant Professor  
Department of Family Medicine  
Consultant, Ethics Consult Service  
University of Iowa Carver College of Medicine

**DAVID MOSER, PHD**

Professor of Psychiatry  
Vice Chair – Psychiatry Faculty Affairs & Development  
University of Iowa Carver College of Medicine

**REBECCA BENSON, MD, PHD**

Director, Ethics Consult Service  
Medical Director, Pediatric Pain & Palliative Care  
Clinical Assistant Professor, Department of Pediatrics  
(Division of General Pediatrics and Adolescent Medicine)  
University of Iowa Carver College of Medicine

**ERICA CARLISLE, MD**

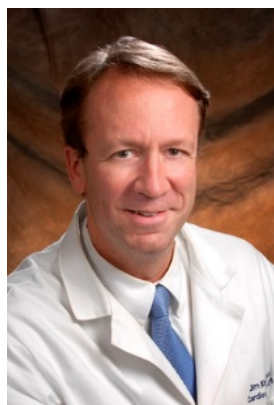
Assistant Professor, Department of Surgery  
(Division of Pediatric Surgery)  
Consultant, Ethics Consult Service  
University of Iowa Carver College of Medicine

**LAURIS KALDJIAN, MD, PHD**

Richard M. Caplan Chair in Biomedical Ethics  
Professor, Department of Internal Medicine  
Director, Program in Bioethics and Humanities  
Consultant, Ethics Consult Service  
University of Iowa Carver College of Medicine

**LOU ANN MONTGOMERY, PHD, RN-BC**

Director, Professional Development and Advanced  
Practice, Nursing Services & Patient Care  
Nursing Director, Emergency Medical Service  
Learning Resource Center  
Co-Director, Nursing Clinical Education Center  
University of Iowa Health Care



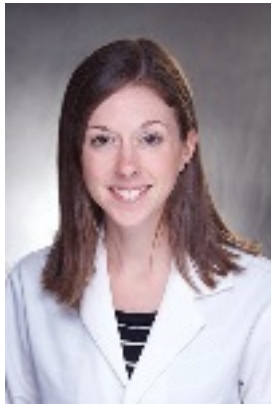
**James Kirkpatrick**



**Rebecca Benson**



**Brittany Bettendorf**



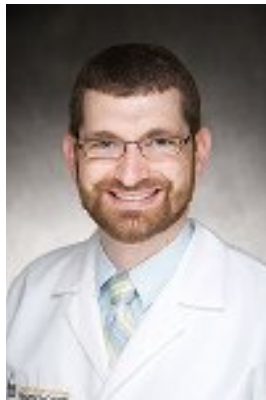
**Erica Carlisle**



**Lauris Kaldjian**



**Joseph Clamon**



**Aaron Kunz**



**Lou Ann Montgomery**



**David Moser**





University of Iowa Health Care

FOR FURTHER INFORMATION, PLEASE CONTACT:

**Program in Bioethics and Humanities**  
**Roy J. and Lucille A. Carver College of Medicine**  
**University of Iowa Carver College of Medicine**  
**500 Newton Road 106-MEB**  
**Iowa City, IA 52242-1101**  
**Phone (319) 335-6706**  
**FAX: (319) 335-8515**

